

DATASHEET

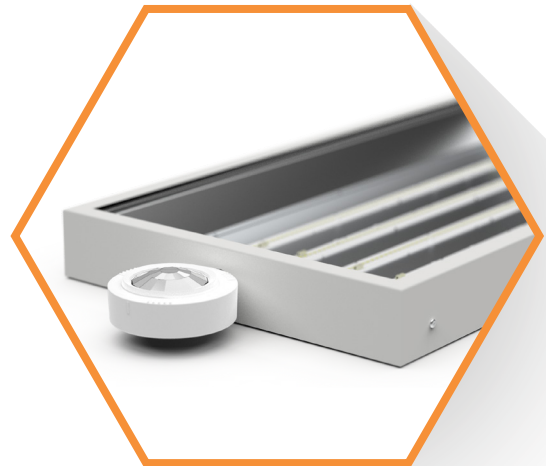
Alpha LED

SPECIFICATIONS

- Energy efficient: Up to 181lm/W
- 5 year warranty
- Aluminium gear tray for greater thermal management
- Sensor variant integrates with Philips app for simple control
- Emergency options available (3HR/3HR-ST/DALI EM)

APPLICATIONS

Industrial Usage / Warehouse & Supermarkets / Workshops /
Factories / Exhibition Halls



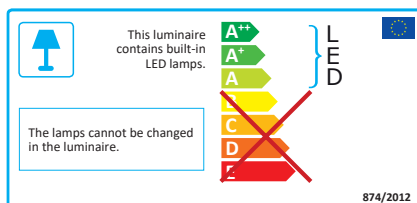
Model	Power*	Luminous Flux* (lm)	Efficacy* (lm/W)	CRI	Colour Temp	Size (mm)
ALPHA814	51W - 93W	9274 - 16277	181	≥80	4000K	725 x 400 x 62
ALPHA824	66W - 134W	11474 - 21584	173	≥80	4000K	725 x 400 x 62
ALPHA826	98W - 204W	17212 - 32860	175	≥80	4000K	725 x 520 x 62
ALPHA814SEN	51W - 93W	9274 - 16277	181	≥80	4000K	845 x 400 x 62
ALPHA824SEN	66W - 134W	11474 - 21584	173	≥80	4000K	845 x 400 x 62
ALPHA826SEN	98W - 204W	17212 - 32860	175	≥80	4000K	845 x 520 x 62

*Luminaire wattages & outputs are adjustable to meet onsite project requirements.

*Please add EM for 3HR emergency, 3HR-ST for self-test or DALI-EM for digital addressable emergency

Technical Specification

Body Type: Sheet Steel
LED Chip Type: Philips
Dimming: Available
Beam Angle: 120°
Input Voltage: 220V -
240V AC 50/60Hz
Power Factor: >0.90
IP Rating: IP20/IP65
Available
IK Rating: IK08
Operating Temp: -20°C
to + 45°C



www.procureled.com

T: +44 (0) 1952 250800 E: info@procureled.com

Waterloo House, Waterloo Road, Ketley Business Park, Ketley, Telford, TF1 5JD



Part of the **PROCUREGROUP**