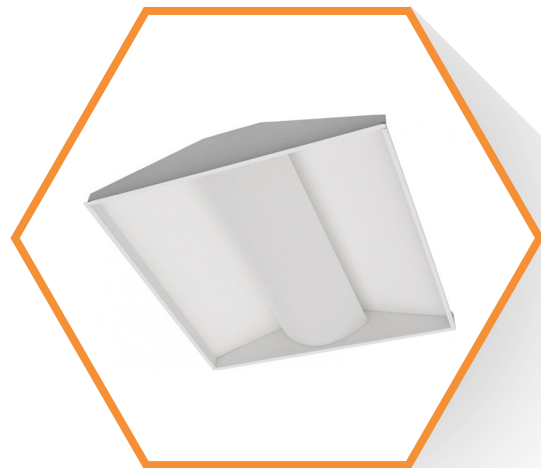


DATASHEET

Pheobus LED

SPECIFICATIONS

- Easy recessed mounted installation
- Indirect light distribution to create glare-free effect
- Modern alternative design to standard
- High lumens efficiency - Up to 114lm/W
- 5 Year warranty



APPLICATIONS

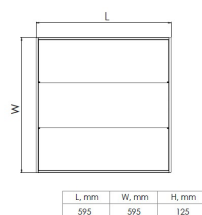
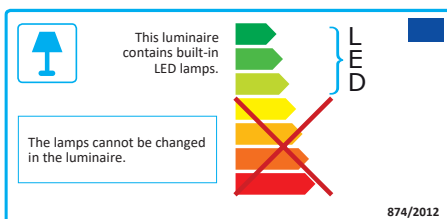
Office / Conference Room / Healthcare / Laboratories / Kitchens
/ Showroom / Cabin / Lobby / Circulation Areas

Model	Power	Luminous Flux (lm)	Efficacy (lm/W)	CRI	Colour Temp*	Size (mm)
PBUS253066STD	25W	2746	108	≥80	3000K	595 x 595 x 125mm
PBUS254066STD	25W	2895	114	≥80	4000K	595 x 595 x 125mm
PBUS333066STD	33W	3471	105	≥80	3000K	595 x 595 x 125mm
PBUS334066STD	33W	3658	111	≥80	4000K	595 x 595 x 125mm
PBUS383066STD	38W	3980	104	≥80	3000K	595 x 595 x 125mm
PBUS384066STD	38W	4194	109	≥80	4000K	595 x 595 x 125mm

* Dimming and Emergency options available, please enquire

Technical Specification

Body Type: Sheet steel, white finish
Diffuser: Opal PC film, UV stable
Input Voltage: AC:220-240V, 50/60Hz
Power Factor: >0.95
IP Rating: IP20
IK Rating: IK02
Operating Temp: 0°C to + 35°C



www.procureled.com

T: +44 (0) 1952 250800 E: info@procureled.com

Waterloo House, Waterloo Road, Ketley Business Park, Ketley, Telford, TF1 5JD



Part of the **PROCUREGROUP**